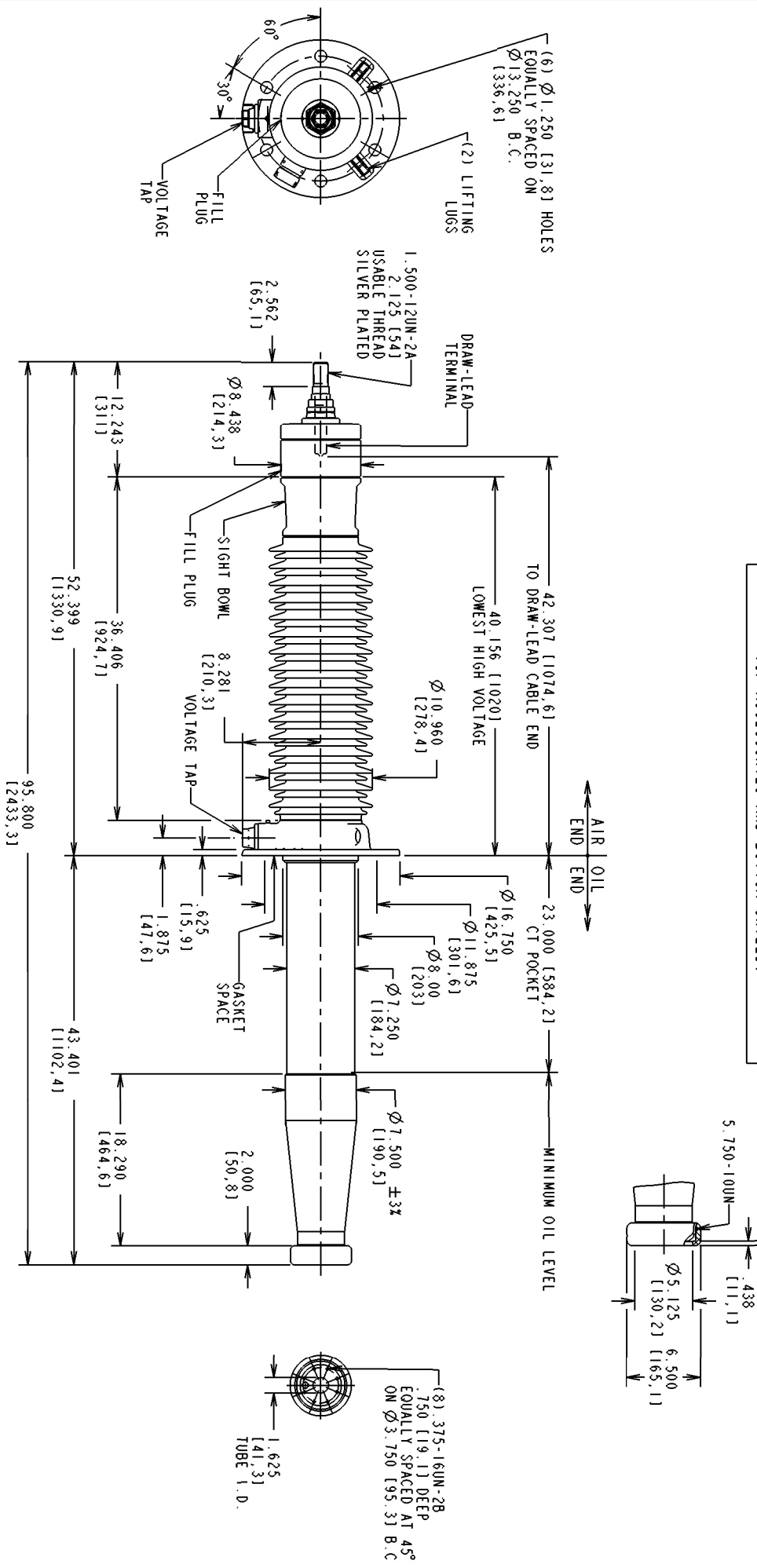


SPECIAL FEATURES: NONE

MAY BE CONVERTED TO INBOARD END CONNECTED BUSHING, STYLE 115W1216AK, BY CHANGING THE TOP ACCESSORIES AND BOTTOM SHIELD.



NO. & LOC.	REVISIONS	STYLE NO.	CATALOG NO.	OUTER INSULATING ENVELOPE COLOR	INSULATION CLASS KV	BASIC IMPULSE LEVEL KV	MAX. LINE TO GROUND VOLTAGE KV	CONNECTION METHOD AND CONTINUOUS CURRENT A @ 60HZ		MINIMUM CREEP DISTANCE in. / [mm]	MINIMUM ARCING DISTANCE in. / [mm]	MAXIMUM ALTITUDE ft / [m]	MOUNTING ANGLE FROM VERTICAL deg	APPROX. WEIGHT lb / [kg]	
4	CSR0510140 VO7 = AB HYBRID T. KUHLMAN 23 AUG 05	115W0800AA	W11B400BB	GRAY	115	550	88	800	N/A	N/A	115.395 [2931]	36.414 [925]	4200 [1280]	0 TO 60	300 [136.1]
5	-ACTIVE- DRAW LEAD CABLE DIM WAS 42.315, WEIGHT WAS 300 LBS. M. WILLIAMS 04/29/09 H. DINH 4/30/09	W11B400	GRAY	GRAY											
6	-ACTIVE- UPDATED SHAPE OF FLANGE LOWER END H. DINH 06/21/11 P. SWAN 06/24/11	BROWN													
7	- VERSION 13 - DIMENSIONS CORRECTED H. DINH 08/04/11 P. SWAN 08/05/11														
8	CONVERSION NOTE CORRECTED H. DINH 08/15/11 P. SWAN 08/15/11														
9	L2 STANDARDIZATION R. CARBONELL 6/20/14 M. WILLIAMS 6/20/14														
<p>TITLE: <b>ABB Inc.</b> ALAMO, TN U.S.A.</p> <p>TYPE: O Plus C™, IEEE, CONDENSER BUSHING</p> <p>RESP. DEPT.: BUSHINGS</p> <p>DRTR.: T. KUHLMAN 23-Aug-05 UNITS = in./[mm]</p> <p>CHKD.: SAP 23-Aug-05 SCALE = 0.125</p> <p>APPR.: T. KUHLMAN 23-Aug-05 LANG. = ENGLISH</p> <p>DRAWING NO.: <b>T115W0800AA</b></p> <p>REV.: 9</p> <p>P/E FILE NET: LIME ZIGER ASS.</p>															