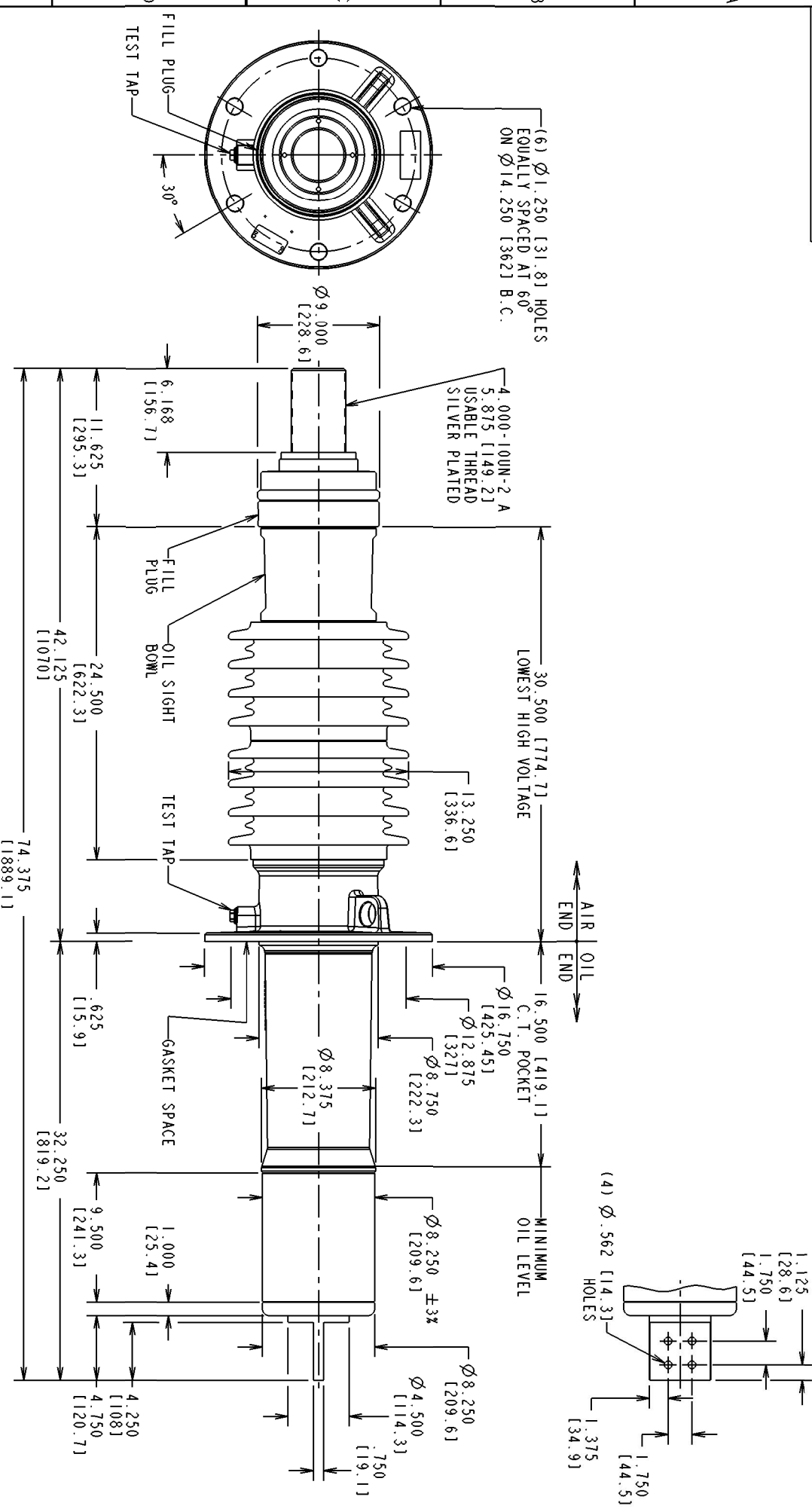


SPECIAL FEATURES: NONE



NO. & LOC.	REVISIONS	STYLE NO.	CATALOG NO.	OUTER INSULATING ENVELOPE COLOR	INSULATION CLASS KV	BASIC IMPULSE LEVEL KV	MAX. LINE TO GROUND VOLTAGE KV	CONNECTION METHOD AND CONTINUOUS CURRENT A @ 60Hz		MINIMUM CREEP DISTANCE in. / [mm]	MINIMUM ARcing DISTANCE in. / [mm]	MAXIMUM ALTITUDE ft / [m]	MOUNTING ANGLE FROM VERTICAL deg	APPROX. WEIGHT lb / [kg]
4	CA82754-11, D-4A0505 REDRAWN ON CADD. WITH DIMENSIONAL CORRECTIONS. J. ARMIGER 09/01/05							DRAW-LEAD	INBOARD END	51.314 [1303.1]	24.500 [622.1]	10000 [3048.1]	0 TO 60	430 [195.0]
5	T. KUHLMAN 09/01/05 CORRECTED INSULATION CLASS KV WAS SHOWING 34 KV							TRANS.	O.C.B.					
6	M. WILLIAMS 08/03/11 D. STACY 08/03/11													
7	CCRP#703201 ADDED THICKNESS OF LOWER TERMINAL BLADE M. WILLIAMS 05/19/14 W. SHINER 05/19/14													
	UPDATED TO SHOW REPLACEMENT OF THE MULTIPIECE FLANGE WITH A CAST FLANGE. WEIGHT WAS 429 LB [194.5 KG] F. FAUR 3/18/2015 W. SHINER 3/18/2015													

ABB Inc. ALAMO, TN U.S.A.

TITLE: TYPE O Plus C™, IEEE, CONDENSER BUSHING

RES. DEPT.: BUSHINGS REF. =

DTR.: J. ARMIGER 01-Sep-05 UNITS = IN/[MM] DRAWING NO. T034W5000UX

CHKD.: SCALE = NTS

APPD.: LANG. = ENGLISH REV.: 7 SHEET 1 OF 1

P/E FILE REF. INT. GEN. ASM