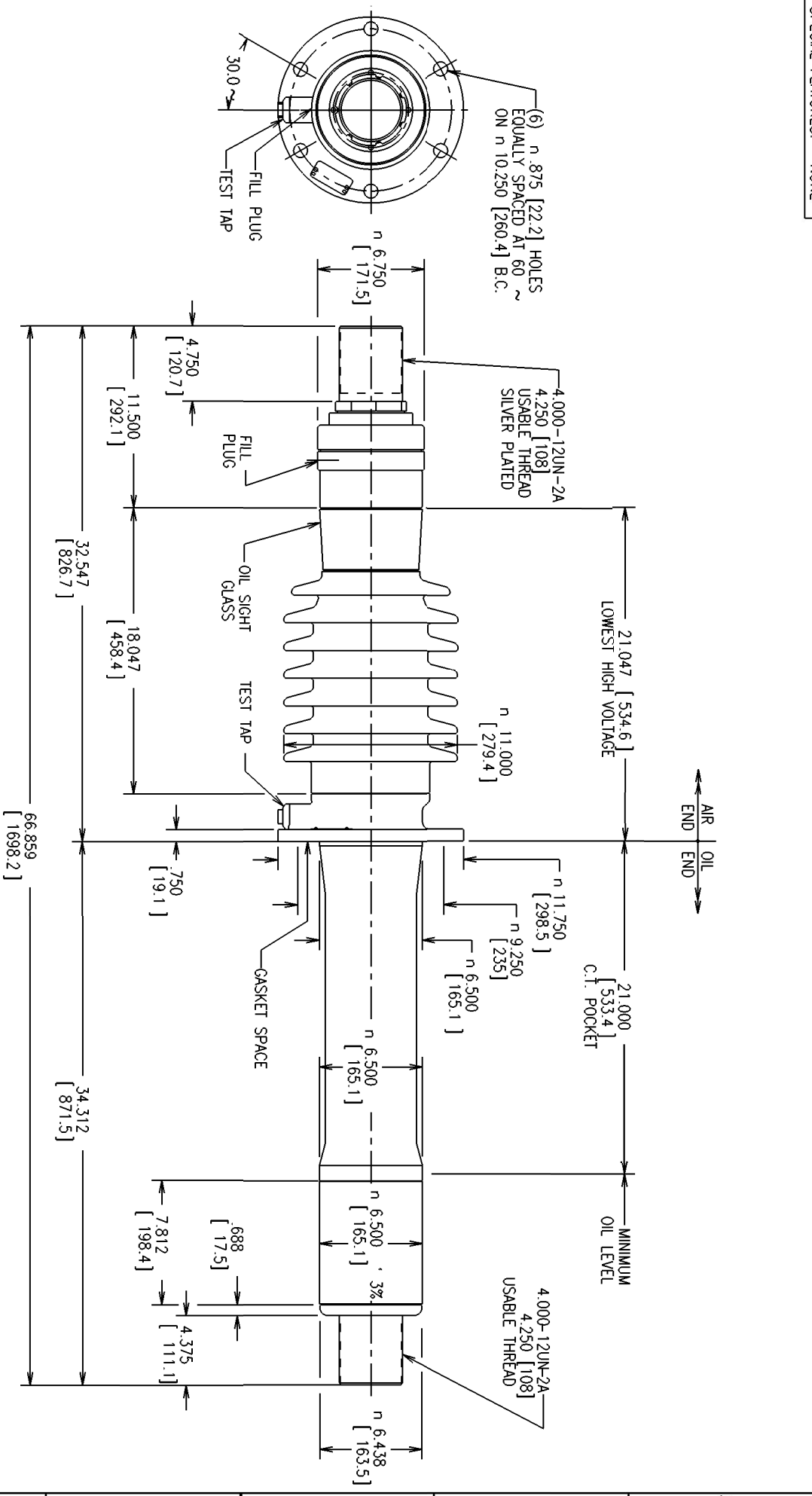


SPECIAL FEATURES: NONE



REVISONS		STYLE NO.	CATALOG NO.	OUTER INSULATING ENVELOPE COLOR	INSULATION CLASS kV	BASIC IMPULSE LEVEL kV	MAX. LINE TO GROUND VOLTAGE kV	CONNECTION METHOD AND CONTINUOUS CURRENT A @60HZ		MINIMUM CREEP DISTANCE in. / [mm]	MINIMUM ARCING DISTANCE in. / [mm]	MAXIMUM ALTITUDE ft / [m]	MOUNTING ANGLE FROM VERTICAL deg	APPROX. WEIGHT lb / [kg]	
3	CA47394-8, CA54092-1, CA56635-2, D-4A0503 REDRAWN ON CADD WITH DIMENSIONAL CORRECTIONS. W.A.SHINER 5-22-02 L.BIBB 5-24-02	034W4000BJ	N/A	GRAY	34.5	200	22	DRAW- N/A	TRANS. 4000	37.781 [960]	18.047 [458]	10000 [3048]	0 TO 30	245 [111.1]	
4	CA82402, CSR#050127 CHANGED UPPER TERM. TERMINAL DIM. 4.750 WAS 4.625 B.BASKIN 08/16/05	N/A	N/A	BROWN				LEAD N/A	O.C.B. N/A						
5	-ACTIVE- CHANGED TO NEW CAST FLANGE DSTACY 8/3/12 PSWAN 8/3/12														
PRINTS TO:		TITLE: TYPE 0 Plus C™, IEEE, CONDENSER BUSHING		ABB Inc. ALAMO, TN USA		DRAWING NO: T034W4000BJ		DTR: W.A.SHINER		RESP. DEPT: BUSHINGS		SCALE = 0.219		REV: 5	
REF:		LANG: ENGLISH		SHEET 1 OF 1		APPD:		DRAFTING NO: T034W4000BJ		SCALE = 0.219		REV: 5		SHEET 1 OF 1	

WE RESERVE ALL RIGHTS IN THIS DOCUMENT AND IN THE INFORMATION CONTAINED THEREIN. REPRODUCTION, USE OR DISCLOSURE TO THIRD PARTIES WITHOUT EXPRESS AUTHORITY IS STRICTLY FORBIDDEN. C ABB.