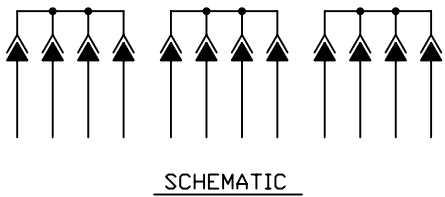
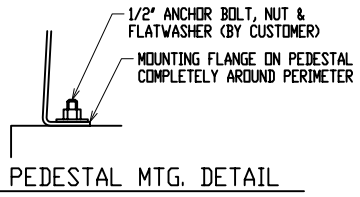
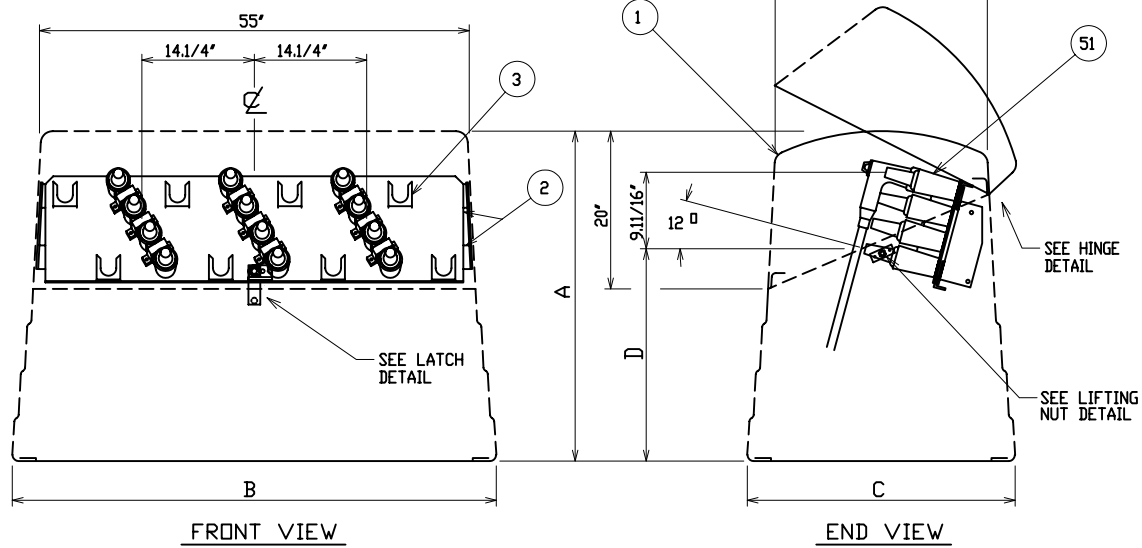


PAD & ANCHOR BOLT DETAIL
 ANCHOR BOLTS TO BE 1/2" DIA. AND TO EXTEND 1-1/2" MINIMUM ABOVE PAD



MODEL No.	OVERALL HEIGHT	OVERALL WIDTH AT BOTTOM	OVERALL DEPTH AT BOTTOM	JUNCTION TERMINAL HEIGHT
	A	B	C	D
CJPF-33-30	30"	58.1/4"	32.1/4"	15"
CJPF-33-41	41"	60.3/4"	34.3/4"	26"

MATERIAL LIST - STANDARD UNIT	
ITEM	DESCRIPTION
1	POWER DESIGN INC MODEL NO CJPF-33 FIBERGLASS CABLE JUNCTION PEDESTAL - MUNSELL GREEN
2	ALUMINUM JUNCTION MOUNTING BAR AND MOUNTING CLIPS
3	STAINLESS STEEL PARKING CLIPS

OPTIONAL EQUIPMENT	
51	200 AMP LOADBREAK JUNCTION - 15KV - 95KV BIL- SPECIFY MANUFACTURER AND 2, 3, OR 4-WAY
52	STAINLESS STEEL U-STRAP MOUNTING CLAMP

NOTE:

1. ORDERING INFORMATION:
 USER SHOULD SELECT "D", TERMINAL HEIGHT, DESIRED. SPECIFY "A", OVERALL HEIGHT, AS A SUFFIX TO THE BASIC PART NO. i.e.; CJPF-33-30 = 30" OVERALL HEIGHT

2. MATERIAL:
 1) FIBERGLASS LAMINATE 3/16" NOMINAL THICKNESS
 2) EXTERIOR UV STABILIZED GELCOAT - 14 MIL NOMINAL THICKNESS - WHITE INTERIOR
 3) FIRE RETARDANT - DOES NOT SUPPORT COMBUSTION
 4) STAINLESS STEEL HARDWARE

3. MOUNTING BAR WILL WITHSTAND A MINIMUM 400 LB. LOADING TO INSTALL OR REMOVE ELBOWS.

DEADFRONT CABLE JUNCTION PEDESTAL

15KV 200 AMP 95KV BIL

THREE PHASE 2, 3, OR 4-WAY LOADBREAK JUNCTION



DRAWN: RB	PAGE	DATE 3-29-04	DRAWING NO. 3377-R1
-----------	------	--------------	---------------------

FILE REF: